

Goals of the SMDWSP public involvement effort:

- Inform and educate the public about the study and plan by sharing factual, understandable, and timely information;
- Ensure that all interested citizens, stakeholders, and officials have meaningful opportunities to participate and influence recommendations;
- Listen and respond to concerns and find creative approaches to resolve them; and
- Build consensus and community support for the study and recommendations in the plan.

Public Involvement



An integral part of the SMDWSP is an extensive public involvement program. This effort began in the project's early stages and will continue throughout the study. Clear and continuous communication is used to help disseminate information and gather

input from the stakeholders and public at key stages throughout the project.

Providing information, obtaining public input and identifying the public's concerns, issues and needs is being accomplished through on-going efforts that include over 40 WSAC meetings, 21 public events, numerous meetings with elected officials from both Miami-Dade County and cities located within the watershed, forums with community and agricultural interests, events with the Keith and Schnars Mobile Information Station, newsletters, fact sheets, the project website and media releases.



Get on the Mobile Information Station

We are on the streets and in your neighborhood, literally, with a Mobile Information Station (MIS)! The MIS has been designed to reach out and share information with you about the SMDWSP.

Be on the lookout for the MIS... coming to an event near you!



For further information, please contact:

Regarding the SMDWSP:

Bob Daniels, Senior Planner
South Florida Regional Planning Council
bohd@sfrpc.com

Regarding the SMDWSP Newsletter:

Kim Giles, Director of Public Relations and Outreach
Keith and Schnars, PA.
kgiles@keithandschnars.com



Please visit the South Miami-Dade Watershed Study and Plan website at:

www.southmiamidadewatershed.com



Final Word

If adopted by the County, the Watershed Plan will leave a proud legacy and chart the course for a sustainable environment and economy for generations to come.



Vision

"The South Miami-Dade Watershed area is composed of vibrant communities with strong identities established on foundations that are economically, socially and environmentally sustainable, which honor private property rights. It supports economically viable and diverse agriculture; ensures a healthy and sustainable south Biscayne Bay and Biscayne and Everglades National Parks; and promotes open space and tourism and recreational facilities based on its natural wonders while welcoming other compatible enterprises. Sustainable urban development preserves historic quality and rural character with a strong sense of local community and stewardship."

Watershed Study Advisory Committee (WSAC)



Watershed Study Nears Completion

Substantial progress has been made on the South Miami-Dade Watershed Study and Plan (SMDWSP) and the next few months are critical to its completion. The purpose of this document is to provide a brief overview of the Study, an update on the progress to date, and the final steps necessary to complete the Study and Plan.

Project Overview

Preparation of the SMDWSP is required by Land Use Policy 3e of the Miami-Dade County Comprehensive Development Master Plan. The Study includes a comprehensive examination of South Miami-Dade County's population growth; infrastructure; land use patterns, including agriculture, industrial and urban land uses; water quality; flooding; transportation and natural resources. When completed in the spring of 2006, the Watershed Plan will provide Miami-Dade County decision makers with a technically sound roadmap for environmentally and economically sustainable land use decisions to the year 2050. The term watershed refers to the entire area that water flows across, under and through on its way to a receiving body of water (e.g., Biscayne Bay). In hydrologic terms, a watershed is a land area that delivers runoff water, sediment and dissolved substances to a water body; in this case the drainage canals that discharge into Biscayne Bay. The most important concept pertaining to watersheds is that activities on land affect water quality and quantity downstream. The South Miami-Dade Watershed is a 371 square mile area located in the southeastern portion of the County. The map on page 3 shows the major features located in the Study Area.

The SMDWSP is being completed by a Project Team made up of the following entities:

- South Florida Regional Planning Council
- Miami-Dade County
- South Florida Water Management District
- Keith and Schnars Consultant Team

In addition, a Watershed Study Advisory Committee (WSAC) established by the Board of County Commissioners, a technical peer review committee (TRC), and the general public play key roles in shaping the study. The WSAC, which meets at least once a month, is made up of 30 members representing all major constituents in the watershed (e.g., agriculture, environmental, development and national parks).

Project Schedule

Task	2003			2004			2005			2006														
	Jun	Jul	Aug	Sept	Oct	Nov	Dec	Jan	Feb	Mar	Apr	May	Jun	Jul	Aug	Sept	Oct	Nov	Dec	Jan	Feb	Mar	Apr	
Task 1 - Existing Conditions and Issue Identification	[Progress bar]																							
Task 2 - Formulate Test Scenarios	[Progress bar]																							
Task 3 - Modeling and Impact Assessment	[Progress bar]																							
Task 4 - Formulation of Preferred Scenario	[Progress bar]																							
Task 5 - Implementation Strategies for the Preferred Land Use Scenario	[Progress bar]																							

Why do we need the Watershed Study and Plan?

It has now been over two and one half years since the Keith and Schnars Consulting Team officially started the SMDWSP. I am pleased to report that much has been accomplished and that the project is close to completion.

Our Team is convinced more than ever that the SMDWSP is one of the most important watershed/land use planning efforts in the history of Florida -- perhaps the Nation. In a little over two months from now we will provide Miami-Dade County with a technically sound roadmap for addressing land use issues and ensuring environmental and economic sustainability for the next 50 years. With the SMDWSP, we have the opportunity to set the example for how communities throughout Florida can address daunting increases in population. This bold and unprecedented planning effort will allow decision makers to be more informed about the consequences of population growth and land use on natural resources, water resources and infrastructure.

Our Team looks forward to working with the public, stakeholders, advisory groups and Miami-Dade County to complete this important planning project.

Michael L. Davis
Vice President, Keith and Schnars, PA.
South Miami-Dade Watershed Study and Plan
Principal-in-Charge - Senior Project Manager



Issue No. 3
Feb. 2006

Planning Process

The Study is divided into five tasks, each of which contains multiple sub-tasks. Each task is part of a logical progression, or building block, that creates a comprehensive 45-year land use and water management plan for South Miami-Dade County. The main "building blocks" of each task are illustrated in the figure below.



Task 1 established baseline conditions that create the foundation for the Study. This included an analysis of population projections and inventories of development features, water resources, and natural communities. In addition, a wide-ranging series of parameters and thresholds for assessing the impacts of various land use scenarios were developed in Task 1. The 20 parameters include water

quality, development densities, transportation, parks, agricultural lands, flood protection, and wetlands.

In Task 2, potential opportunities for, and constraints against, future development were defined and mapped. A baseline map was then created depicting 2003 land use patterns. The final step in Task 2 was the development of hypothetical test land use scenarios based on three different land use policy directives. Both 2025 and 2050 population projections were utilized, resulting in six test land use scenarios.

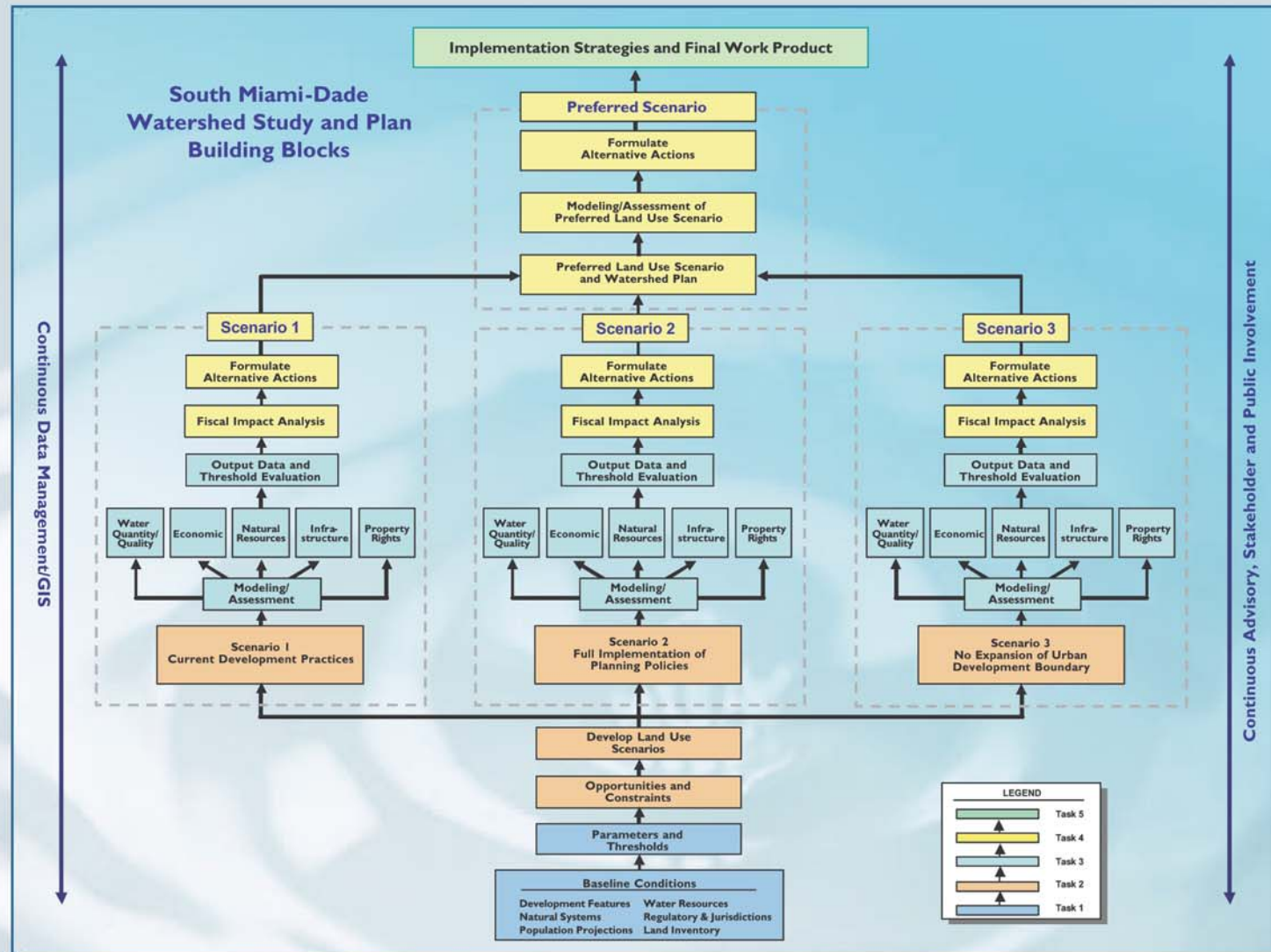
In Task 3, the impacts of the six test land use scenarios were assessed against the 20 parameters and thresholds developed in Task 1, and compared to the baseline condition.

Task 4, which is now underway, involves the development of a preferred land use scenario. The development of the preferred scenario will be informed by the results of the test scenario assessments completed in Task 3. The draft preferred scenario will be

revised based on input from the WSAC, stakeholders, the general public, and the TRC, and will then be assessed against the parameters and thresholds. In addition, an evaluation of potential impacts on private property rights will be completed for the preferred scenario.



To assist the County in implementing the final Plan, a set of Implementation strategies for the preferred land use scenario will be developed as part of Task 5.



Where is the South Miami-Dade Watershed?



"See the Progress"

As of January 2006, Tasks 1, 2 and 3 have been completed. This culmination of this work is represented in over 2,500 pages of technically sound baseline, planning and assessment information. Following is a list of completed tasks:

- TASK 1: BASELINE CONDITIONS**
- Subtask 1.1 Relevant Studies
 - Subtask 1.2 Population Growths
 - Subtask 1.3 Development Features
 - Subtask 1.4 Natural Communities
 - Subtask 1.5 Water Resources
 - Subtask 1.6 Regulatory Jurisdictions
 - Subtask 1.7 Land Inventory
 - Subtask 1.8 Parameters and Thresholds

- TASK 2: TEST LAND USE SCENARIOS**
- Subtask 2.1 Opportunities and Constraints
 - Subtask 2.2 Test Land Use Scenarios

- TASK 3: TEST SCENARIO ASSESSMENT RESULTS**
- Subtask 3.1 Land Use and Economics
 - Subtask 3.2 Infrastructure
 - Subtask 3.3 Natural Communities
 - Subtask 3.4 Water Resources

- TASK 4: PREFERRED SCENARIO**
- Subtask 4.1 Underway
 - Subtask 4.2 Underway

Each final document produced is posted on the project web site, and may be reviewed by visiting: www.southmiamidadewatershed.com.



Next Steps

The development of a preferred scenario (Task 4) has been initiated and should be completed by mid-March 2006. The WSAC worked on the preferred scenario at their January and February meetings. The TRC will be providing input on the preferred scenario at their February 14th meeting.

In addition, two public workshops will be held in February in order to provide the general public with an opportunity to comment on the draft preferred scenario before it is finalized. Once the preferred scenario is finalized, the same assessments used for the test scenarios will be conducted.

In Task 5, the final task in the planning process, implementation strategies for the preferred scenario will be prepared, including proposed amendments to Miami-Dade County's Comprehensive Development Master Plan, site development standards, best management practices for protecting water quality, and land preservation techniques including regulatory incentives. These strategies will address

potential effects on property rights and include measures to mitigate such effects.

The ultimate success of the Watershed Plan will turn on its strong technical basis, the WSAC's endorsement and the County's formal adoption. The Plan is based on the best planning and science and the WSAC has carefully reviewed, discussed, and reached consensus on all work products submitted to date. The next few months will prove to be the final crucial steps in completing and adopting this unprecedented effort to plan for the future of South Miami-Dade County.