

**SOUTH MIAMI-DADE COUNTY WATERSHED STUDY COVER SHEET**

***Sub-task 1.6: Description of Regulatory and Planning Agency Jurisdictions***

**Subject:** Regulation Matrix

**Final Work Product:**

Identify and map jurisdictional boundaries, regulations and agencies with jurisdiction in the Watershed Study Area and Biscayne Bay.

**Submission Date to SFRPC Project Manager:**

Interim Work Product Draft - July 11, 2003

Interim Work Product Final Draft - July 18, 2003

Interim Work Product revised to incorporate TRC and SFRPC comments - August 28, 2003

Draft Final Work Product - October 15, 2003

Draft Final Work Product revised to incorporate TRC comments - December 5, 2003

Final Work Product revised to incorporate PMT and WSAC comments - February 19, 2004

**Watershed Study Advisory Committee Final Review – June 3, 2004**

**Consensus Score**

<b>Ranking</b>	<b>5</b>	<b>4</b>	<b>3</b>	<b>2</b>	<b>1</b>
<b>Number of Members</b>	21	5	1	0	0

5 – Wholehearted Support

4 – Support

3 – Neutral but Supports Fully to Outside World

2 – Questions Pending

1 – Blocks Any Decision

Consensus is defined as everyone ranking a work product no less than three.

**Deliverables:**

1. Matrix and Maps (3 electronic copies and 5 hard copies)

## List of Preparers

Participating Professional and Title	Professional Role	Qualifications	Years of Experience	Area of Specialty
Eric Silva Senior Project Manager	Regulatory Analysis and Project Management	M.A. Marine Affairs B.A. Political Science/Marine Affairs A.I.C.P.	9	Land Planning
Marie Ecton Senior Project Manager	Natural System	M.S. Biology	20	Natural Communities
Sean Ebersold Senior Planner	Regulatory Analysis	B.A. - Urban and Regional Planning	6	Land Planning
Gene Stillman Senior Planner	Regulatory Analysis	M.S. - Urban and Regional Planning B.S. - Social Science	8	Land Planning
Sarah Norton, Biologist	Regulatory Analysis	B.S. - Marine Biology	4	Marine Biology
Kent Cain, GIS Analyst	Geographic Information Analysis	B.S. - Geology	7	Geographic Information Systems
Samantha Horowitz, Associate Planner	Geographic Information Analysis	M.U.R.P. - Urban and Regional Planning B.A. - Anthropology	3	Land Planning/ Geographic Information Systems
Gina Edwards, Technical Editor	Document Editing	B.S. - Communications	20	Technical Writing

## List of Reviewers

Reviewer and Professional Title	Qualifications	Years of Experience	Area of Specialty
Michael Davis, Vice President for Environmental and Planning	M.S. – Biology B.S – Biology and Environmental Science	25	Water Resources Policy
Marc LaFerrier, Planning Director	Graduate studies in Public Administration, B.S. Urban and Regional Planning, A.I.C.P.	18	Land Planning
Tykus Holloway, Senior Associate Planner	M.U.R.P. - Urban and Regional Planning B.S. Civil Engineering, E.I.	3	Land Planning/ Geographic Information Systems/Engineering
Alice Bojanowski Senior Planner	M.S. - Urban and Regional Planning A.I.C.P.	10	Land Planning
David Helter Project Director	M.S. - Urban and Regional Planning B.S. - Geology	14	Land Planning
Ron Pollworth Technical Editor	M.S. Continuing Studies/Writing B.S. English	27	Technical Writing

## TABLE OF CONTENTS

	<u>Page</u>
<b>EXECUTIVE SUMMARY .....</b>	<b>i</b>
<b>1.0 INTRODUCTION .....</b>	<b>1</b>
<b>2.0 METHODOLOGY .....</b>	<b>2</b>
<b>3.0 REGULATORY MATRIX .....</b>	<b>3</b>

**LIST OF FIGURES:**

Figure 1: Florida Keys National Marine Sanctuary ..... 14  
Figure 2: National Park Service ..... 15  
Figure 3: Biscayne Bay Aquatic Preserve ..... 16  
Figure 4: South Florida Regional Planning Council ..... 17  
Figure 5: Miami-Dade County ..... 18  
Figure 6: Miami-Dade County Municipalities ..... 19

## **LIST OF ACRONYMS AND ABBREVIATIONS**

CDMP	Miami-Dade County Comprehensive Development Master Plan, May 1997, as amended through April 2001
CWA	Clean Water Act
DCA	Florida Department of Community Affairs
DERM	Miami-Dade County Department of Environmental Resource Management
DP&Z	Miami-Dade County Department of Planning and Zoning
DRI	Development of Regional Impact
EPA	United States Environmental Protection Agency
FWCA	Fish and Wildlife Coordination Act
FDEP	Florida Department of Environmental Protection
FDOT	Florida Department of Transportation
FFWCC	Florida Fish and Wildlife Conservation Commission
F.S.	Florida Statutes
LDR	Land Development Regulations
MPO	Miami-Dade County Metropolitan Planning Organization
NOAA	National Oceanic and Atmospheric Administration
NPS	National Park Service
USACE	United States Army Corps of Engineers
USFWS	United States Fish and Wildlife Service
SFRPC	South Florida Regional Planning Council
SFWMD	South Florida Water Management District
SMDWSP	South Miami-Dade Watershed Study and Plan
UDB	Urban Development Boundary
WASD	Miami-Dade County Water and Sewer Department

## **EXECUTIVE SUMMARY: SUB-TASK 1.6 – REGULATORY AND PLANNING AGENCY JURISDICTIONS**

### **Overview of the South Miami-Dade Watershed Study and Plan**

The South Miami-Dade Watershed, a 400 square mile area located in the southeastern portion of Miami-Dade County, is increasingly recognized as one of the most critical watersheds in Florida. The Watershed plays a vital role in the health of Biscayne Bay as well as providing for the urban and agriculture needs of the County.

The South Miami-Dade Watershed Study and Plan (SMDWSP) is a long-term land planning and water resources study required by the Miami-Dade County Comprehensive Development Master Plan. Divided into five major task areas, the 26- to 30-month study includes a wide-ranging look at South Miami-Dade County’s population growth; infrastructure; land ownership, including agriculture, industrial and urban land uses; pollution; water resources; wildlife; and natural areas.

The Study will formulate and analyze three potential land use scenarios. The impact of each scenario on water resources, wildlife habitat, infrastructure, agriculture, the economy and property rights will be evaluated. This evaluation will help form a fourth “preferred” scenario.

The results of this collaborative study process will be the development of a Plan designed to balance the various competing interests in South Miami-Dade – providing the framework for a sustainable economy and environment through the year 2050. The Plan will contain the policies, strategies and procedures necessary for implementing the preferred scenario.

The Sub-task 1.6 report is part of seven inventory and baseline information sub-tasks. This report and the other Task 1 reports provide baseline and reference information necessary to complete the SMDWSP.

### **Sub-task 1.6 – Regulatory and Planning Agency Jurisdictions**

The purpose of Sub-task 1.6 is to inventory and document regulatory and planning agencies having jurisdiction in the Watershed Study Area. A good understanding of existing regulatory and planning jurisdictions is required to evaluate the options for development, restoration and/or resource protection within the Watershed Study Area. These options will be identified based on the evaluation of potential amendments to existing land development regulations (LDRs), comprehensive plan elements, environmental practices and engineering standards. Amendments may include, but are not limited to, special overlay zones, changes in zoning and comprehensive plan classifications, building and site design changes, and best management practices. Other options will be identified through evaluation of federal, State, and regional policies and regulations.

This report includes a matrix of all regulatory agencies with jurisdiction in the Watershed Study Area and Biscayne Bay. Applicable agencies were determined by reviewing federal regulations, State statutes, and municipal codes and plans. Regulatory and planning agencies were selected from these rules and researched further to determine their potential relevance to the Study. A brief description of each agency is included, as well as the applicable, overarching regulations that may affect the Watershed Study Area. The geographic scope of each agency is provided in the matrix. Maps for some of the more relevant jurisdictions are provided at the end of this report.

The agencies identified are as follows:

- Federal
  - United States Army Corps of Engineers
  - United States Environmental Protection Agency
  - United States Fish and Wildlife Service
  - National Oceanic and Atmospheric Administration
  - National Park Service
  
- State and Regional
  - Florida Department of Community Affairs
  - Florida Department of Environmental Protections
  - South Florida Water Management District
  - Florida Department of Transportation
  - South Florida Regional Planning Council
  - Florida Fish and Wildlife Conservation Commission
  
- Local
  - Miami-Dade County Department of Planning and Zoning
  - Miami-Dade County Department of Environmental Resource Management
  - Miami-Dade County Water and Sewer Department
  - Miami-Dade County Public Works Department
  - Miami-Dade County Metropolitan Planning Organization
  - Miami-Dade Transit Agency
  - Miami-Dade Parks and Recreation
  - Miami-Dade Solid Waste Management
  - Miami-Dade Fire Rescue
  - Miami-Dade Police Department
  - School Board of Miami-Dade County
  - City of Coral Gables
  - City of Homestead
  - City of Florida City
  - City of West Miami

- City of South Miami
- Village of Pinecrest
- City of Palmetto Bay

Recognizing that the successful completion and implementation of the SMDWSP will require interagency collaboration, the Sub-task 1.6 report identifies all agencies with jurisdiction in the Watershed Study Area. The report will provide a useful document for coordinating agency involvement and identifying regulatory issues which may affect the land use scenarios. It will also be utilized to formulate opportunities and constraints in Sub-task 2.1.

## **1.0 INTRODUCTION**

The purpose of Sub-task 1.6 is to inventory and document regulatory and planning agencies having regulatory jurisdiction in the Watershed Study Area and Biscayne Bay. Cataloging regulations and agencies with jurisdiction over development, environmental resources and infrastructure is a key component of the baseline assessment. The Sub-task 1.6 report is a description of agencies with regulatory jurisdiction over the other base data sets (e.g. natural communities, water resources and land use).

## **2.0 METHODOLOGY**

The report contains a matrix of all regulatory and planning agencies having jurisdiction over activities in the Watershed Study Area and Biscayne Bay. Applicable agencies were determined by reviewing federal regulations, State statutes, and municipal codes and plans. Regulatory and planning agencies were selected from these rules and further researched to determine their potential relevance to the Study. Geography, specific to the Watershed Study Area, was not considered as a defining characteristic because no agency has jurisdiction solely in the Watershed Study Area. The geographic extent of the agencies referenced in this report, apply to the Watershed Study Area, Miami-Dade County, the State of Florida and in some cases the entire country. Regulatory triggers for involving each agency are defined to provide reference and guidance for future tasks.

Information contained in this report must be considered in the context of the entire Study to understand each agency's role, if any, in the Study. For example, seven cities have jurisdiction within the Watershed Study Area but land use changes may only be recommended in one city. The purpose of this report is to provide an inventory of agencies and a description of their jurisdiction. The application of this information will occur in future tasks.

**SOUTH MIAMI-DADE WATERSHED STUDY AND PLAN**

**SUB-TASK 1.6: DESCRIPTION OF REGULATORY AND PLANNING AGENCY JURISDICTIONS**

Agency	Agency Jurisdiction	Applicable Laws Associated with Jurisdiction	How the Agency's Jurisdiction is Related to the Study
<b>Federal</b>			
United States Army Corps of Engineers (USACE)	Federal Agency - Waters of the United States	<b>The Clean Water Act</b> (33 U.S.C. §1251) Section 404 <b>Rivers and Harbors Act</b> Section 10 <b>Marine Protection, Research and Sanctuaries Act</b> Section 103 33 CFR 326 – 331	The applicability of this regulatory agency to the Study includes the following potential related activities: the regulation of the discharge of dredged or fill material into the waters of the United States, including wetlands and coastal waters, and the regulation of work and structures in navigable waters. The Corps civil works mission also includes: flood protection; water management; navigation; and environmental restoration (e.g., Comprehensive Everglades Restoration Plan).  Geographic Scope of Jurisdiction: All waters of the United States, including the Watershed Study Area
United States Environmental Protection Agency (EPA)	Federal Agency - Laws protecting the environment	<b>The Clean Water Act</b> (33 U.S.C. §1251) 40 CFR 230 <b>The Clean Air Act</b> (42 U.S.C. §7401)	The Environmental Protection Agency's regulatory authority over specific activities within the Watershed Study Area, primarily involves the implementation of The Clean Water Act (CWA). The EPA provides comments to the Army Corps of Engineers on permit applications for the discharge of dredge or fill material under CWA Section 404. This includes an opinion on the compliance with the 404(b)(1) Guidelines. EPA also provides guidance to State and local government air quality issues, such as motor vehicle emissions budgets. EPA's authority with respect to air quality is derived from The Clean Air Act.  Geographic Scope of Jurisdiction: Watershed Study Area
United States Fish and Wildlife Service (USFWS)	Federal Agency - Conserve, protect, and enhance fish, wildlife, plants and their habitats	<b>Endangered Species Act</b> (16 U.S.C. §1531) <b>The Fish and Wildlife Coordination Act</b> (16 U.S.C. §661)	The United States Fish and Wildlife Service enforces various laws and treaties to protect plant and animal species and their habitats. One such law is the Endangered Species Act. It is anticipated that each of the land use scenarios will have varying levels of impact on the endangered and/or threatened species protected by the Endangered Species Act.  Under The Fish and Wildlife Coordination Act (FWCA), the USFWS provides comments to the USACE on Section 404 permit applications.  Geographic Scope of Jurisdiction: Watershed Study Area
National Oceanic and Atmospheric Administration (NOAA)	Federal Agency - Marine resources regulations	<b>Magnuson-Stevens Fishery Conservation and Management Act</b> (16 U.S.C. §1801) <b>National Marine Sanctuaries Act</b> (16 U.S.C. §1431)  <b>Endangered Species Act</b> (16 U.S.C. §1531)	The applicability of the National Oceanic and Atmospheric Administration to the Study is related to potential impacts to marine fisheries and the Florida Keys National Marine Sanctuary. In this arena, NOAA's jurisdiction may extend to fisheries conservation, marine mammal protection and enforcement of endangered species laws.  Geographic Scope of Jurisdiction: Watershed Study Area and Florida Keys National Marine Sanctuary. Figure 1 describes the location of the Florida Keys National Marine Sanctuary relative to the Watershed Study Area.

**SOUTH MIAMI-DADE WATERSHED STUDY AND PLAN**

**SUB-TASK 1.6: DESCRIPTION OF REGULATORY AND PLANNING AGENCY JURISDICTIONS**

<b>Agency</b>	<b>Agency Jurisdiction</b>	<b>Applicable Laws Associated with Jurisdiction</b>	<b>How the Agency's Jurisdiction is Related to the Study</b>
National Park Service (NPS)	Federal Agency - Promote and regulate the use of the national parks	<b>National Park Service Organic Act</b> (16 U.S.C. 1, 2 3, and 4)	Consequences to Biscayne National Park and Everglades National Park from any proposed action under the land use scenarios will be identified through numerous criteria, specific evaluation and close coordination with the National Park Service. As part of this close coordination with the National Park Service, potential opportunities and constraints will be identified to help develop acceptable and permitable land use scenarios that do not cause adverse impacts to Biscayne National Park and Everglades National Park. Due to the National Park Service's authority to purchase and protect land, they may be identified to implement the SMDWSP.  Geographic Scope of Jurisdiction: National Parks. Figure 2 describes the location of Biscayne and Everglades National Parks relative to the Watershed Study Area.
<b>State and Regional</b>			
Florida Department of Community Affairs (DCA)	State Agency - State and local planning, emergency management, and community revitalization	<p><b>Florida Statutes:</b> Chapter 163 Part II: Local Government Comprehensive Planning and Land Development Regulation Act</p> <p>Chapter 187: State Comprehensive Plan</p> <p>Chapter 252: Florida Emergency Management Act</p> <p>Chapter 380: Florida Environmental Land and Water Management Act</p> <p><b>Florida Administrative Code:</b> Rule 9J</p>	<p>The Department of Community Affairs has a regulatory involvement in the Study through its statewide jurisdiction over comprehensive plan amendments and/or developments of regional impact (DRI). The following Chapters of the Florida Statutes (F.S.) define DCA's jurisdiction:</p> <p>The purpose of Chapter 163, F.S. is to utilize and strengthen the existing role, processes, and powers of local governments in the establishment and implementation of comprehensive planning programs to guide and control future land use and development throughout the State. Under Chapter 163, F.S. the DCA has regulatory jurisdiction over any comprehensive plan amendment resulting for the SMDWSP.</p> <p>The purpose of Chapter 187, F.S. (State Comprehensive Plan) is to provide long-range policy guidance for the orderly social, economic and physical growth in the State. Chapter 187, F.S. provides the DCA with guidelines for reviewing comprehensive plans and amendments.</p> <p>The purpose Chapter 252, F.S. is to ensure that preparations of the State will be adequate to deal with, reduce vulnerability to, and recover from emergencies and disasters resulting from natural, technological, or manmade causes. Under Chapter 252, F.S., the DCA's role is to ensure adequate emergency preparedness for residents of the State.</p> <p>The purpose of Chapter 380 F.S. is to protect natural resources and the environment; ensure a water management system that will reverse the deterioration of water quality and provide optimum utilization of our limited water resources; facilitate orderly and well-planned development; and protect the health, welfare, safety, and quality of life of the residents of the State. The DCA's main role under Chapter 380 F.S. is the review of new DRIs and amendments to existing DRIs.</p> <p>Geographic Scope of Jurisdiction: Watershed Study Area</p>

**SOUTH MIAMI-DADE WATERSHED STUDY AND PLAN**

**SUB-TASK 1.6: DESCRIPTION OF REGULATORY AND PLANNING AGENCY JURISDICTIONS**

<b>Agency</b>	<b>Agency Jurisdiction</b>	<b>Applicable Laws Associated with Jurisdiction</b>	<b>How the Agency's Jurisdiction is Related to the Study</b>
<p>Florida Department of Environmental Protection (FDEP)</p>	<p>State Agency - Sovereign Submerged Lands and Outstanding Florida Waters</p>	<p><b>Florida Statutes:</b>                      Chapter 380: Florida Environmental Land and Water Management Act                      Chapter 258.397: Biscayne Bay Aquatic Preserve                      Chapter 259: Land Acquisition for Conservation or Recreation</p> <p><b>Florida Administrative Code:</b>                      Chapter 17: Department of Environmental Regulation                      Chapter 62: Department of Environmental Protection</p>	<p>The Florida Department of Environmental Protection is a regulatory entity having jurisdiction over environmental and water resources issues as authorized by Chapters 380 and 259 of the Florida Statutes and by Chapters 17 and 62 of the Florida Administrative Code. Proposed land use activities in the watershed's uplands, wetlands and other surface waters (including Outstanding Florida Waters) will be reviewed to ensure that they will not degrade water quality or habitat for aquatic or wetland-dependent wildlife, as well as ensuring special protection because of their natural attributes. In accordance with a memorandum or understanding with the SFWMD, the FDEP reviews and issues environmental resources permits.</p> <p>Land-based actions that impact the resources of the Biscayne Bay Aquatic Preserve will also trigger FDEP involvement.</p> <p>The FDEP may assist with the implementation of the SMDWSP through its jurisdiction under Chapter 259, F.S. (Florida Forever Act; Florida Preservation 2000 Act), which involves the acquisition of state-owned lands for preservation, conservation, and recreation purposes and lands in areas of critical state concern.</p> <p>Geographic Scope of Jurisdiction: Watershed Study Area and Biscayne Bay Aquatic Preserve. Figure 3 describes the location of the Biscayne Bay Aquatic Preserve relative to the Watershed Study Area.</p>
<p>South Florida Water Management District (SFWMD)</p>	<p>State Agency – Water Resources</p>	<p><b>Florida Statutes:</b>                      Chapter 373</p> <p><b>Florida Administrative Code:</b>                      Chapter 40</p> <p><b>Miami-Dade County Code of Ordinances</b>                      Chapter 33: Zoning                      Section 33-303.1 – Development Impact Committee</p>	<p>The South Florida Water Management District's applicability to the Study stems from its regulatory jurisdiction over matters involving the following activities: canal right of way management; permit governance for environmental resources; consumptive water use permitting; canal right of way occupancy; water well permitting; public access; use and management of District-owned lands; and reduction of nutrient and pollution flows in various water systems. Specific Study-related activities that would trigger SFWMD involvement may include activities that could potentially degrade water quality through loss of wetlands, or discharges of improperly treated stormwater runoff, cause flooding (such as by changing off-site runoff characteristics), or degrade habitat for aquatic or wetland-dependent wildlife. The SFWMD would also be involved with any issues related to the implementation of Comprehensive Everglades Restoration Plan and impacts to the regional water supply. In accordance with a memorandum or understanding with the FDEP, the SFWMD reviews and issues environmental resources permits.</p> <p>As a member of the Miami-Dade County Development Impact Committee, the SFWMD reviews development applications of county and regional impact.</p> <p>Geographic Scope of Jurisdiction: Watershed Study Area</p>

**SOUTH MIAMI-DADE WATERSHED STUDY AND PLAN**

**SUB-TASK 1.6: DESCRIPTION OF REGULATORY AND PLANNING AGENCY JURISDICTIONS**

<b>Agency</b>	<b>Agency Jurisdiction</b>	<b>Applicable Laws Associated with Jurisdiction</b>	<b>How the Agency's Jurisdiction is Related to the Study</b>
Florida Department of Transportation (FDOT)	State Agency – State Roadways	<b>Florida Statutes:</b> Chapter 334-349: Public Transportation	<p>The Florida Department of Transportation is responsible for the planning and development of an integrated, balanced statewide transportation system. Specific Study-related activities that would trigger FDOT involvement would include proposing new and/or modifying existing state-owned transportation-related infrastructure.</p> <p>The land use scenarios will have associated and varying land use intensities that may cause impacts to State roadways. Careful study, evaluation and coordination with FDOT will be required to ensure that State level of service standards are adhered to.</p> <p>Geographic Scope of Jurisdiction: Watershed Study Area</p>
South Florida Regional Planning Council (SFRPC)	State Agency – Regional Planning and Growth Management	<b>Florida Statutes:</b> Chapter 186: State and Regional Planning	<p>The South Florida Regional Planning Council has a regulatory involvement in the Study through its regional jurisdiction over comprehensive plan amendments and/or development of regional impacts. Overall regulatory authority stems from State law that establishes the State planning process and provides the direction for the delivery of governmental services, the means for defining and achieving the specific goals and objectives of the State, and a method for evaluating the accomplishment of those goals and objectives.</p> <p>Geographic Scope of Jurisdiction: Watershed Study Area. Figure 4 illustrates that the SFRPC's jurisdiction covers the entire Watershed Study Area.</p>
Florida Fish and Wildlife Conservation Commission (FFWCC)	State Agency – Wildlife	<b>Florida Statutes:</b> Chapter 372	<p>The Florida Fish and Wildlife Conservation Commission has regulatory and executive powers of the State with respect to wild animal life and fresh water aquatic life, and marine life. Chapter 372, F.S. authorizes the Commission to manage, conserve fish and wildlife resources and their habitats, and threatened and endangered species.</p> <p>Geographic Scope of Jurisdiction: Watershed Study Area</p>
<b>Local</b>			
Miami-Dade County Department of Planning and Zoning (DP&Z)	Unincorporated Miami-Dade County; Planning and Zoning, Concurrency and Development Impact Committee	<p><b>Comprehensive Development Master Plan, May 1997, as amended through April 2001</b></p> <p><b>Miami-Dade County Code of Ordinances</b> Chapter 8: Building Code Chapter 16A: Historic Preservation Chapter 17: Housing Chapter 20: Municipalities- Includes boundary changes, incorporation, Boundaries Commission and Community Councils</p>	<p>The Miami-Dade County Department of Planning and Zoning (DP&amp;Z) reviews requests for amendments to the Comprehensive Development Master Plan and Zoning Code for all areas of unincorporated Miami-Dade County. The most significant growth management tool utilized by DP&amp;Z is the urban development boundary (UDB).</p> <p>Any Study recommendations to change land use, zoning or the UDB will be sponsored by the DP&amp;Z. The DP&amp;Z is the County agency tasked with leading the County's review of Study work products and making final recommendations to the Board of County Commissioners.</p> <p>Through the Planning Advisory Board and Boundaries Commission, the DP&amp;Z has the ability to make recommendations in the annexation and incorporation process.</p> <p>As a concurrency review agency, DP&amp;Z staff ensures that development proposals meet the standards for minimum acceptable levels of service contained in the capital improvements element of the Miami-Dade County Comprehensive Development Master Plan, May 1997, as amended through April 2001.</p>

**SOUTH MIAMI-DADE WATERSHED STUDY AND PLAN**

**SUB-TASK 1.6: DESCRIPTION OF REGULATORY AND PLANNING AGENCY JURISDICTIONS**

Agency	Agency Jurisdiction	Applicable Laws Associated with Jurisdiction	How the Agency's Jurisdiction is Related to the Study
Miami-Dade County Department of Planning and Zoning (DP&Z) (continued)		Chapter 23A-1: Comprehensive Development Master Plan Chapter 33: Zoning Section 33-303.1 – Development Impact Committee Chapter 33G – Service Concurrency Management Program Section 33G-4	As a member of the Development Impact Committee, the DP&Z reviews development applications of county and regional impact.  DP&Z planning functions related to demographic and land use information form the basis for a significant portion of the baseline information for the Study. DP&Z planning functions related to design and community planning will assist with the implementation of the final plan.  Geographic Scope of Jurisdiction: Watershed Study Area. Figure 5 illustrates that Miami-Dade County's jurisdiction covers the entire Watershed Study Area.
Miami-Dade County Department of Environmental Resource Management (DERM)	Incorporated and unincorporated Miami-Dade County; Environmental Resources, Concurrency and Development Impact Committee	<b>Miami-Dade County Code of Ordinances</b>  Chapter 24: Environmental Protection  Chapter 33: Zoning Section 33-303.1 – Development Impact Committee Chapter 33G – Service Concurrency Management Program Section 33G-4	The Miami-Dade County Department of Environmental Resource Management regulates and manages activities affecting environmental resources within both incorporated and unincorporated areas of Miami-Dade County, including: canal rights-of way; tidal waters; submerged bay-bottom lands and wetlands; dewatering; construction of drainage systems; tree preservation and protection; and stormwater utility. Chapter 24, Miami-Dade County Code of Ordinances, provides for the environmental protection of specific resources such as wellfields and coastal wetlands.  As a concurrency review agency, DERM staff ensures that development proposals meet the standards for minimum acceptable levels of service contained in the capital improvements element of the Miami-Dade County CDMP.  As a member of the Development Impact Committee, the DERM reviews development applications of county and regional impact.  Geographic Scope of Jurisdiction: Watershed Study Area. Figure 5 illustrates that Miami-Dade County's jurisdiction covers the entire Watershed Study Area.
Miami-Dade County Water and Sewer Department (WASD)	Incorporated and unincorporated Miami-Dade County; Water and Sewer Facilities and Development Impact Committee	<b>Miami-Dade County Code of Ordinances</b>  Chapter 32 – Water and Sewer Regulations  Chapter 33: Zoning Section 33-303.1 – Development Impact Committee	A key component and one of the most relevant aspects of coordinating with the Miami-Dade County Water and Sewer Department is to locate potential future development in areas that currently have water and sewer infrastructure and available capacity. Coordination will be required throughout the Study process and will first occur during the development of the opportunities and constraints (Sub-task 2.1).  As a member of the Development Impact Committee, the Water and Sewer Department reviews development applications of county and regional impact.  Geographic Scope of Jurisdiction: Watershed Study Area. Figure 5 illustrates that Miami-Dade County's jurisdiction covers the entire Watershed Study Area.



**SOUTH MIAMI-DADE WATERSHED STUDY AND PLAN**

**SUB-TASK 1.6: DESCRIPTION OF REGULATORY AND PLANNING AGENCY JURISDICTIONS**

<b>Agency</b>	<b>Agency Jurisdiction</b>	<b>Applicable Laws Associated with Jurisdiction</b>	<b>How the Agency's Jurisdiction is Related to the Study</b>
Miami-Dade Transit Agency (MDTA)	Incorporated and unincorporated Miami-Dade County; Transit and Concurrency	<p><b>Miami-Dade County Code of Ordinances</b></p> <p>Chapter 2 – Administration - Article XIX – Miami-Dade Transit Agency</p> <p>Chapter 33G – Service Concurrency Management Program Section 33G-4</p>	<p>As a concurrency review agency, Transit Agency staff ensures that development proposals meet the standards for minimum acceptable levels of service contained in the capital improvements element of the CDMP.</p> <p>Geographic Scope of Jurisdiction: Watershed Study Area. Figure 5 illustrates that Miami-Dade County's jurisdiction covers the entire Watershed Study Area.</p>
Miami-Dade Parks and Recreation	Incorporated and unincorporated Miami-Dade County; Parks, Concurrency and Development Impact Committee	<p><b>Miami-Dade County Code of Ordinances</b></p> <p>Chapter 2 – Administration - Article X – Parks and Recreation Department</p> <p>Chapter 33: Zoning Section 33-303.1 – Development Impact Committee</p> <p>Chapter 33G - Service Concurrency Management Program Section 33G - 4</p> <p>Chapter 33H – Park Impact Fee Ordinance</p>	<p>As a concurrency review agency, Parks and Recreation staff ensure that development proposals meet the standards for minimum acceptable levels of service contained in the capital improvements element of the CDMP.</p> <p>As a member of the Development Impact Committee, the Parks and Recreation Department reviews development applications of county and regional impact.</p> <p>Geographic Scope of Jurisdiction: Watershed Study Area. Figure 5 illustrates that Miami-Dade County's jurisdiction covers the entire Watershed Study Area.</p>

**SOUTH MIAMI-DADE WATERSHED STUDY AND PLAN**

**SUB-TASK 1.6: DESCRIPTION OF REGULATORY AND PLANNING AGENCY JURISDICTIONS**

<b>Agency</b>	<b>Agency Jurisdiction</b>	<b>Applicable Laws Associated with Jurisdiction</b>	<b>How the Agency's Jurisdiction is Related to the Study</b>
Miami-Dade Solid Waste Management	Unincorporated Miami-Dade County; Solid Waste, Concurrency and Development Impact Committee	<b>Miami-Dade County Code of Ordinances</b>  Chapter 15 - Solid Waste Management  Chapter 33: Zoning Section 33-303.1 - Development Impact Committee  Chapter 33G - Service Concurrency Management Program Section 33G - 4	As a concurrency review agency, Solid Waste Management staff ensures that development proposals meet the standards for minimum acceptable levels of service contained in the capital improvements element of the CDMP.  As a member of the Development Impact Committee, the Solid Waste Management Department reviews development applications of county impact and regional impact.  Geographic Scope of Jurisdiction: Watershed Study Area. Figure 5 illustrates that Miami-Dade County's jurisdiction covers the entire Watershed Study Area.
Miami-Dade Fire Rescue	Unincorporated Miami-Dade County; Fire Rescue Services, Concurrency and Development Impact Committee	<b>Miami-Dade County Code of Ordinances</b>  Chapter 2 - Administration -Article XXI - Fire Department  Chapter 33: Zoning Section 33-303.1 – Development Impact Committee  Chapter 33G – Service Concurrency Management Program Section 33G - 4  Chapter 33J – Fire and Emergency Medical Impact Fees	As a concurrency review agency, Fire and Rescue staff ensure that development proposals meet the standards for minimum acceptable levels of service contained in the capital improvements element of the CDMP.  As a member of the Development Impact Committee, the Fire and Rescue Department reviews development applications of County and regional impact.  Geographic Scope of Jurisdiction: Watershed Study Area. Figure 5 illustrates that Miami-Dade County's jurisdiction covers the entire Watershed Study Area.

**SOUTH MIAMI-DADE WATERSHED STUDY AND PLAN**

**SUB-TASK 1.6: DESCRIPTION OF REGULATORY AND PLANNING AGENCY JURISDICTIONS**

<b>Agency</b>	<b>Agency Jurisdiction</b>	<b>Applicable Laws Associated with Jurisdiction</b>	<b>How the Agency's Jurisdiction is Related to the Study</b>
Miami-Dade Police Department	Unincorporated Miami-Dade County; Police Services and Development Impact Committee	<b>Miami-Dade County Code of Ordinances</b>  Chapter 33: Zoning Section 33-303.1 – Development Impact Committee	As a member of the Development Impact Committee, the Police Department reviews development applications of county and regional impact.  Geographic Scope of Jurisdiction: Watershed Study Area. Figure 5 illustrates that Miami-Dade County's jurisdiction covers the entire Watershed Study Area.
School Board of Miami-Dade County	Incorporated and unincorporated Miami-Dade County; Public Schools - Development Impact Committee	<b>Miami-Dade County Code of Ordinances</b>  Chapter 33: Zoning Section 33-303.1 – Development Impact Committee	As a member of the Development Impact Committee, the School Board reviews development applications of county and regional impact.  Geographic Scope of Jurisdiction: Watershed Study Area. Figure 5 illustrates that Miami-Dade County's jurisdiction covers the entire Watershed Study Area.
City of Coral Gables	Municipal Planning and Zoning	<b>Comprehensive Plan</b>  <b>City of Coral Gables Code of Ordinances, Part II</b>  Ch. 6 – Buildings and Building Regulations Ch. 7.5 – Concurrency Management Program Ch. 7.7 – Development within Flood Hazard Districts Ch. 8 – Dredging and Filling Ch. 11 – Historic Preservation Ch. 14 – Marine Activities, Structures and Ways Ch. 17 – Parks and Recreation Ch. 27 – Vegetation	The City of Coral Gables has jurisdiction over any comprehensive plan and zoning amendments within the City limits. Land use scenarios and SMDWSP recommendations which affect parcels within the City limits will be coordinated with City officials to ensure the successful implementation of the Plan.  Geographic Scope of Jurisdiction: City of Coral Gables. Figure 6 describes the location of the City of Coral Gables relative to the Watershed Study Area.

**SOUTH MIAMI-DADE WATERSHED STUDY AND PLAN**

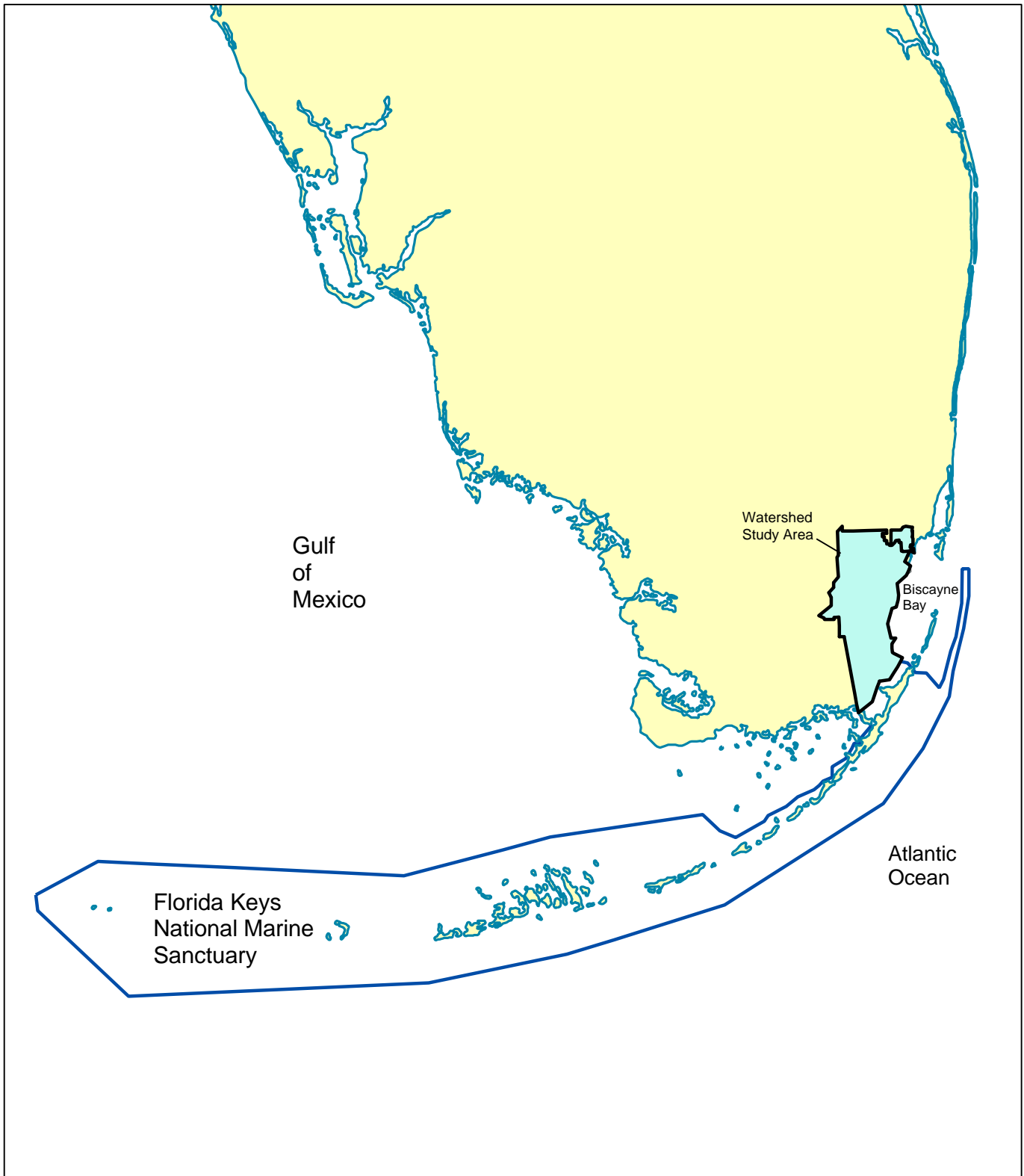
**SUB-TASK 1.6: DESCRIPTION OF REGULATORY AND PLANNING AGENCY JURISDICTIONS**

<b>Agency</b>	<b>Agency Jurisdiction</b>	<b>Applicable Laws Associated with Jurisdiction</b>	<b>How the Agency's Jurisdiction is Related to the Study</b>
City of Homestead	Municipal Planning and Zoning	<p><b>Comprehensive Plan</b></p> <p><b>City of Homestead Code, Part II</b></p> <p>Ch. 6 – Buildings and Building Regulations                      Ch. 9 – Comprehensive Plan                      Ch. 13 – Health and Sanitation                      Ch. 14 – Historic Preservation                      Ch. 20 – Parks and Recreation                      Ch. 22 – Public Improvements                      Ch. 29 – Vegetation                      Ch. 30 – Zoning</p>	<p>The City of Homestead has jurisdiction over any comprehensive plan and zoning amendments within the City limits. Land use scenarios and Watershed Plan recommendations which affect parcels within the City limits will be coordinated with City officials to ensure the successful implementation of the Plan.</p> <p>Geographic Scope of Jurisdiction: City of Homestead. Figure 6 describes the location of the City of Homestead relative to the Watershed Study Area.</p>
City of Florida City	Municipal Planning and Zoning	<p><b>Comprehensive Plan</b></p> <p><b>City of Florida City Code of Ordinances, Part II</b></p> <p>Ch. 14 – Buildings and Building Regulations                      Ch. 30 – Environment                      Ch. 34 – Floods                      Ch. 43 – Stormwater Utility Management Program                      Ch. 62 – Zoning</p>	<p>The City of Florida City has jurisdiction over any comprehensive plan and zoning amendments within the City limits. Land use scenarios and SMDWSP recommendations which affect parcels within the City limits will be coordinated with City officials to ensure the successful implementation of the Plan.</p> <p>Geographic Scope of Jurisdiction: City of Florida City. Figure 6 describes the location of the City of Florida City relative to the Watershed Study Area.</p>
City of West Miami	Municipal Planning and Zoning	<p><b>Comprehensive Plan</b></p> <p><b>City of West Miami Code of Ordinances</b></p> <p>Zoning Ordinance 282</p>	<p>The City of West Miami has jurisdiction over any comprehensive plan and zoning amendments within the City limits. Land use scenarios and SMDWSP recommendations which affect parcels within the City limits will be coordinated with City officials to ensure the successful implementation of the Plan.</p> <p>Geographic Scope of Jurisdiction: City of West Miami. Figure 6 describes the location of the City of West Miami relative to the Watershed Study Area.</p>

**SOUTH MIAMI-DADE WATERSHED STUDY AND PLAN**

**SUB-TASK 1.6: DESCRIPTION OF REGULATORY AND PLANNING AGENCY JURISDICTIONS**

<b>Agency</b>	<b>Agency Jurisdiction</b>	<b>Applicable Laws Associated with Jurisdiction</b>	<b>How the Agency’s Jurisdiction is Related to the Study</b>
City of South Miami	Municipal Planning and Zoning	<b>Comprehensive Plan</b>  <b>Land Development Code</b>  Article III – Zoning Regulations	The City of South Miami has jurisdiction over any comprehensive plan and zoning amendments within the City limits. Land use scenarios and SMDWSP recommendations which affect parcels within the City limits will be coordinated with City officials to ensure the successful implementation of the Plan.  Geographic Scope of Jurisdiction: City of South Miami. Figure 6 describes the location of the City of South Miami relative to the Watershed Study Area.
Village of Pinecrest          Village of Pinecrest (continued)	Municipal Planning and Zoning	<b>Comprehensive Plan</b>  <b>Village of Pinecrest Code of Ordinances, Part II</b>  Ch. 8 – Buildings and Building Regulations Ch. 18 – Parks and Recreation Department Rules and Regulations Ch. 30 – Land Development Regulations Volume II – Ch. 30 – Land Development Regulations	The Village of Pinecrest has jurisdiction over any comprehensive plan and zoning amendments within the Village limits. Land use scenarios and SMDWSP recommendations which affect parcels within the Village limits will be coordinated with Village officials to ensure the successful implementation of the Plan.  Geographic Scope of Jurisdiction: Village of Pinecrest. Figure 6 describes the location of the Village of Pinecrest relative to the Watershed Study Area.
Village of Palmetto Bay	Municipal Planning and Zoning	<b>Comprehensive Plan</b>  <b>City of Palmetto Bay Code of Ordinances</b>  Ch. 7 – Building and Building Regulations Ch. 10 – Coastal Areas and Waterways Ch. 14 – Floodplain Management Ch. 23 – Planning and Development	The Village of Palmetto Bay has jurisdiction over any comprehensive plan and zoning amendments within the Village limits. Land use scenarios and SMDWSP recommendations which affect parcels within the Village limits will be coordinated with Village officials to ensure the successful implementation of the Plan.  Geographic Scope of Jurisdiction: Village of Palmetto Bay. Figure 6 describes the location of the Village of Palmetto Bay relative to the Watershed Study Area.



<p>MIAMI DADE KEITH and SCHNARS, P.A. ENGINEERS, PLANNERS, SURVEYORS</p>	<p>Figure 1 Florida Keys National Marine Sanctuary Managed by the National Oceanic and Atmospheric Administration (NOAA)</p> <p>South Miami-Dade Watershed Study and Plan</p>	<p>Source: Florida Department of Environmental Protection, 2001.</p> <p>0 5 10 20 Miles</p>	
--	---	---	--

z:\Projects\17161 South Miami-Dade Watershed\GIS Data\GIS Projects\SubTask 1.6 GIS Maps\FKNMS.mxd

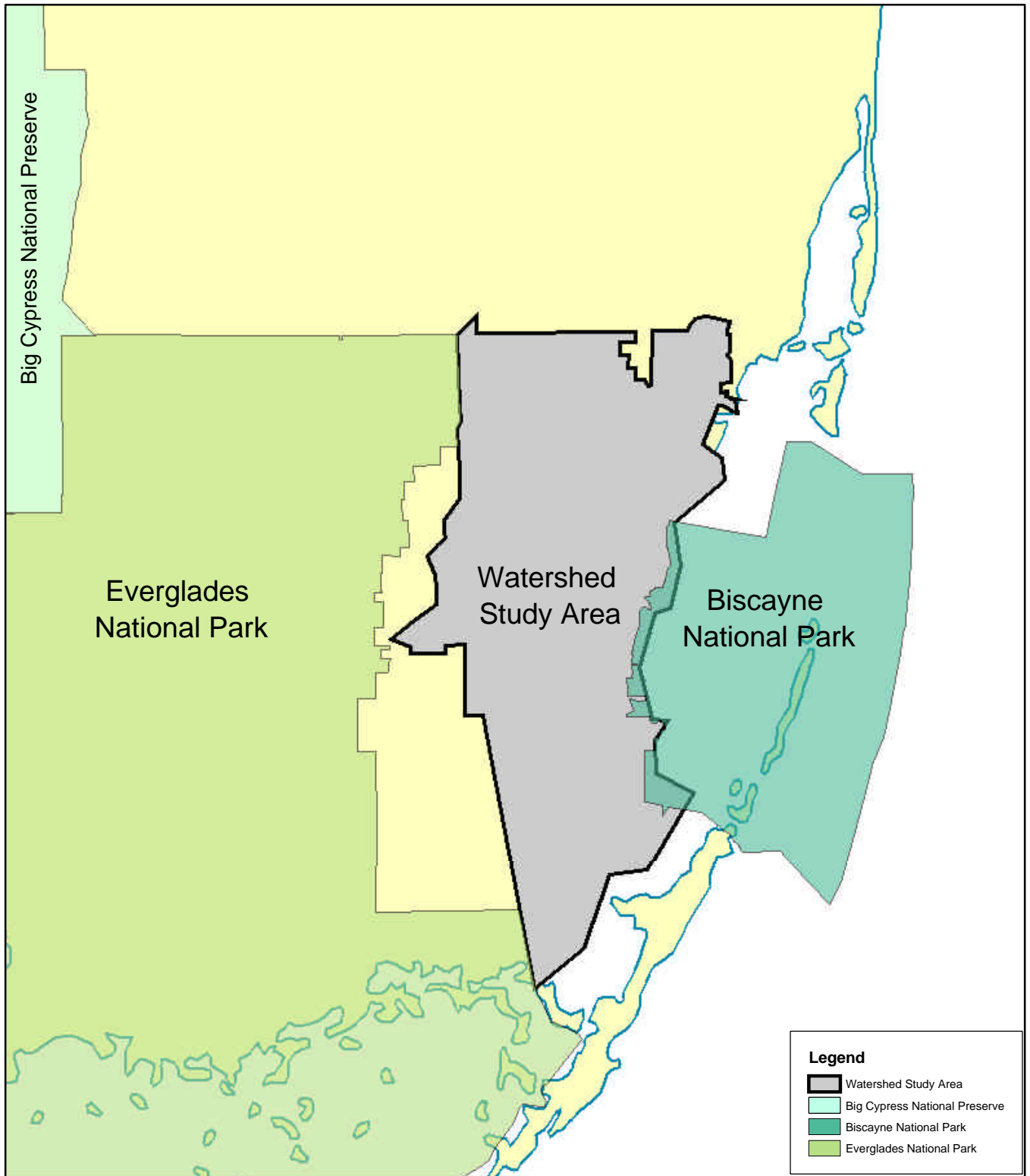
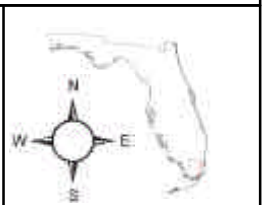
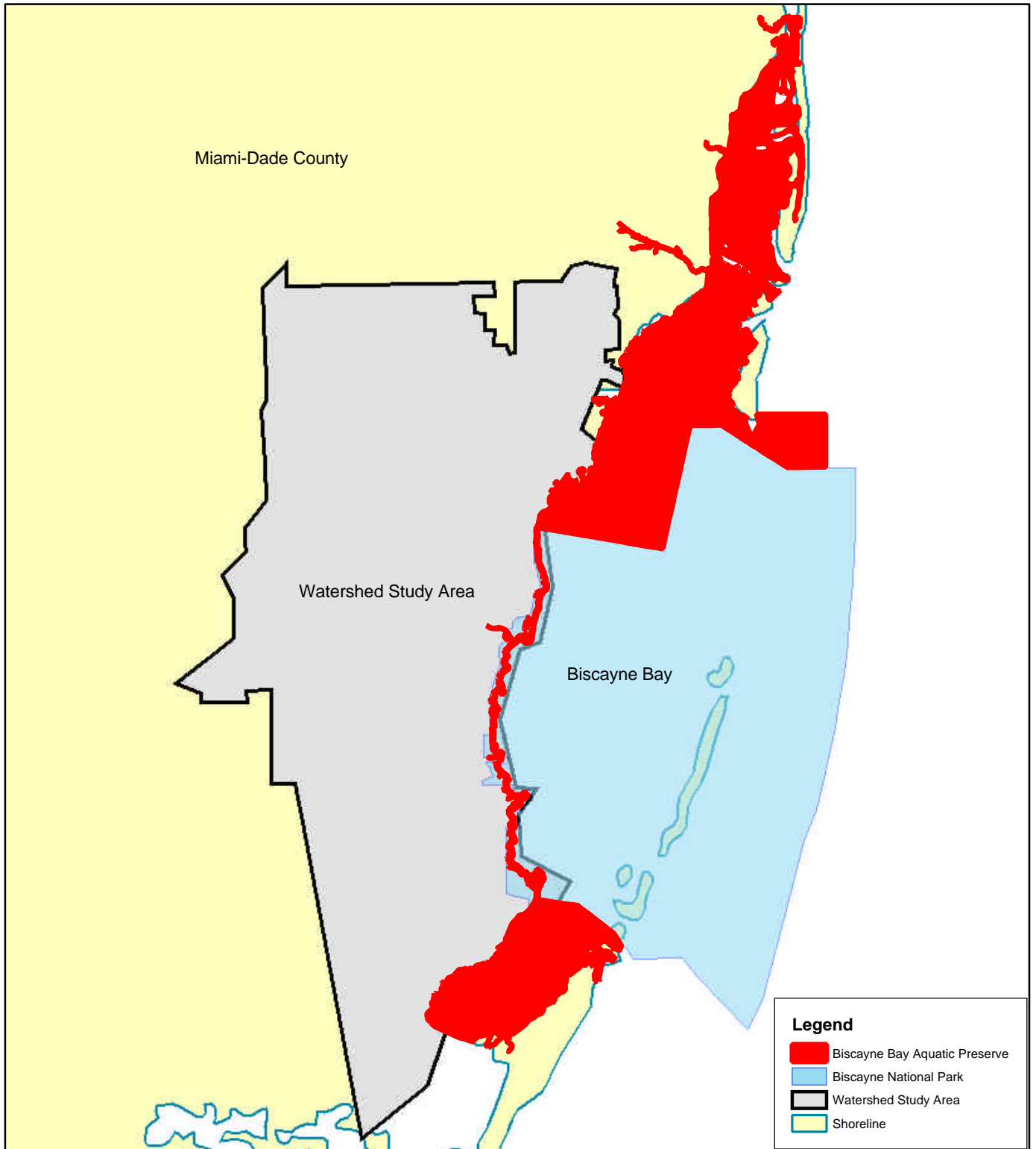


Figure 2  
National Park Service  
  
South Miami-Dade  
Watershed Study and Plan

Source: Based on data provided by NOAA 1998; Miami-Dade County ITD, 1998  
0 1.5 3 6 Miles

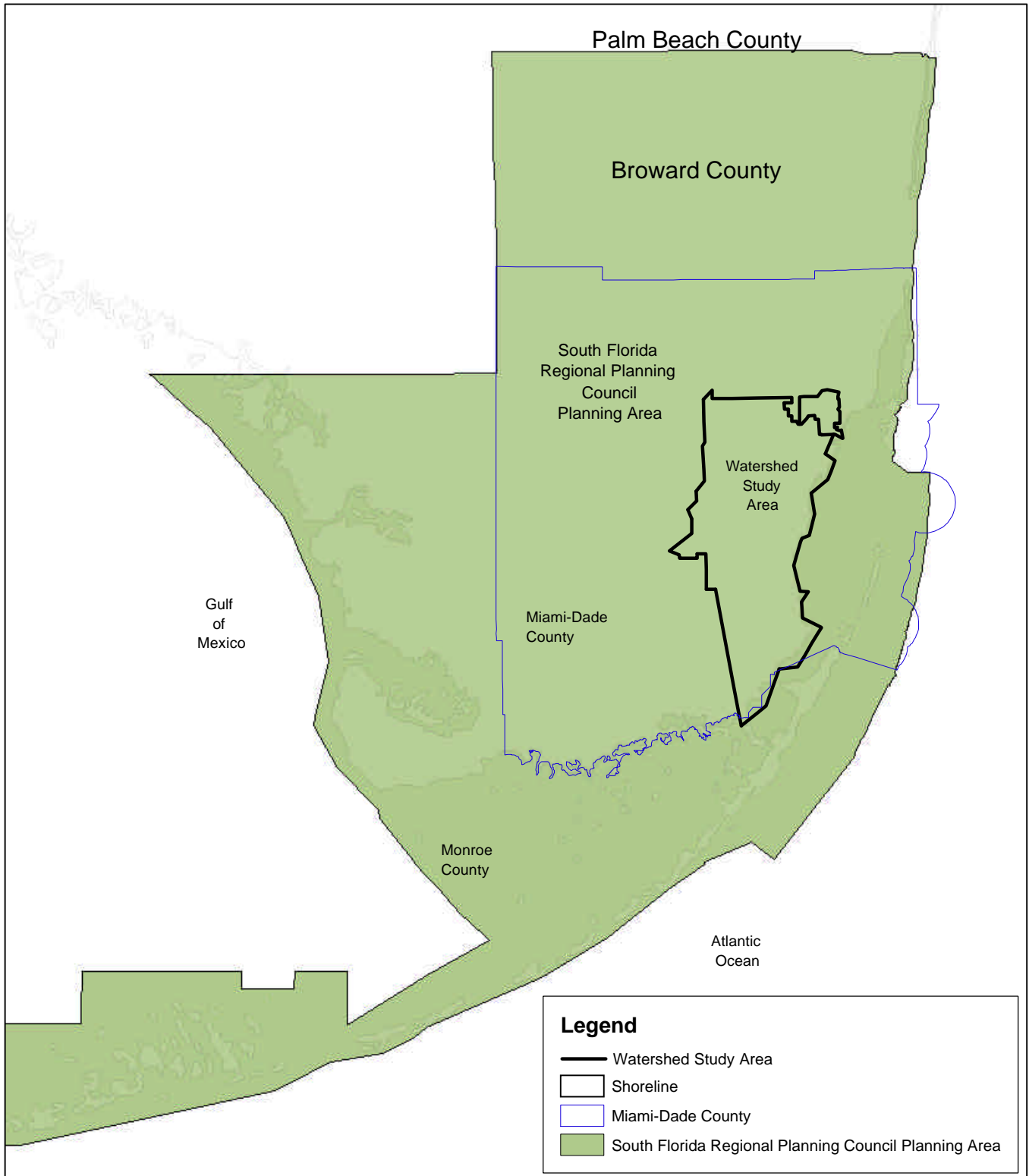


Z:\Projects\17161 South Miami-Dade Watershed\GIS Data\GIS Projects\SubTask 1.6 GIS Maps\National Park Service.mxd









<p>MIAMI DADE</p> <p><b>KEITH and SCHNARS, P.A.</b> ENGINEERS, PLANNERS, SURVEYORS</p>	<p>Figure 3 Biscayne Bay Aquatic Preserve Managed by the Florida Department of Environmental Protection</p> <p>South Miami-Dade Watershed Study and Plan</p>	<p>Source: Florida Department of Environmental Protection, 1997.</p> <p>0 1.5 3 6 Miles</p>	
--	--	---	--

z:\Projects\17161 South Miami-Dade Watershed\GIS Data\GIS Projects\SubTask 1.6 GIS Maps\Aquatic Preserves.mxd

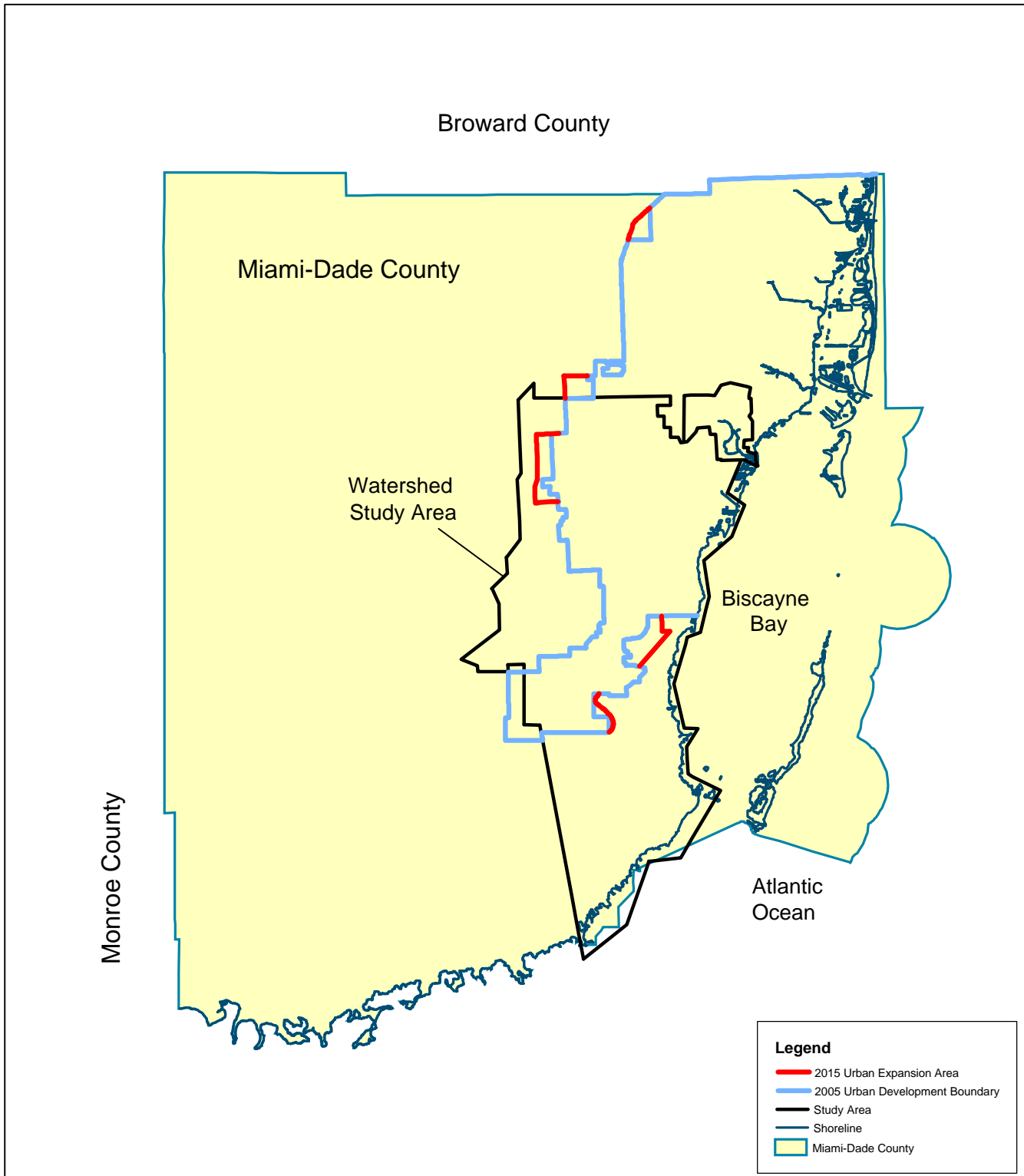


**Legend**

-  Watershed Study Area
-  Shoreline
-  Miami-Dade County
-  South Florida Regional Planning Council Planning Area

	<p>Figure 4</p> <p>South Florida Regional Planning Council</p> <p>South Miami-Dade Watershed Study and Plan</p>	<p>Source: Based on data provided by SFWMD, 2003.</p> <p>0 3 6 12 Miles</p>	
---	---	---	---

Z:\Projects\17161 South Miami-Dade Watershed\GIS Data\GIS Projects\SubTask 1.6 GIS Maps\SFRPC.mxd



	<p>Figure 5 Miami-Dade County</p> <p>South Miami-Dade Watershed Study and Plan</p>	<p>Source: Based on data provided by Miami-Dade County</p> <p>0 2 4 8 Miles</p>	
--	--	---	--

Z:\Projects\17161 South Miami-Dade Watershed\GIS Data\GIS Projects\SubTask 1.6 GIS Maps\SFRPC.mxd\Miami-Dade County

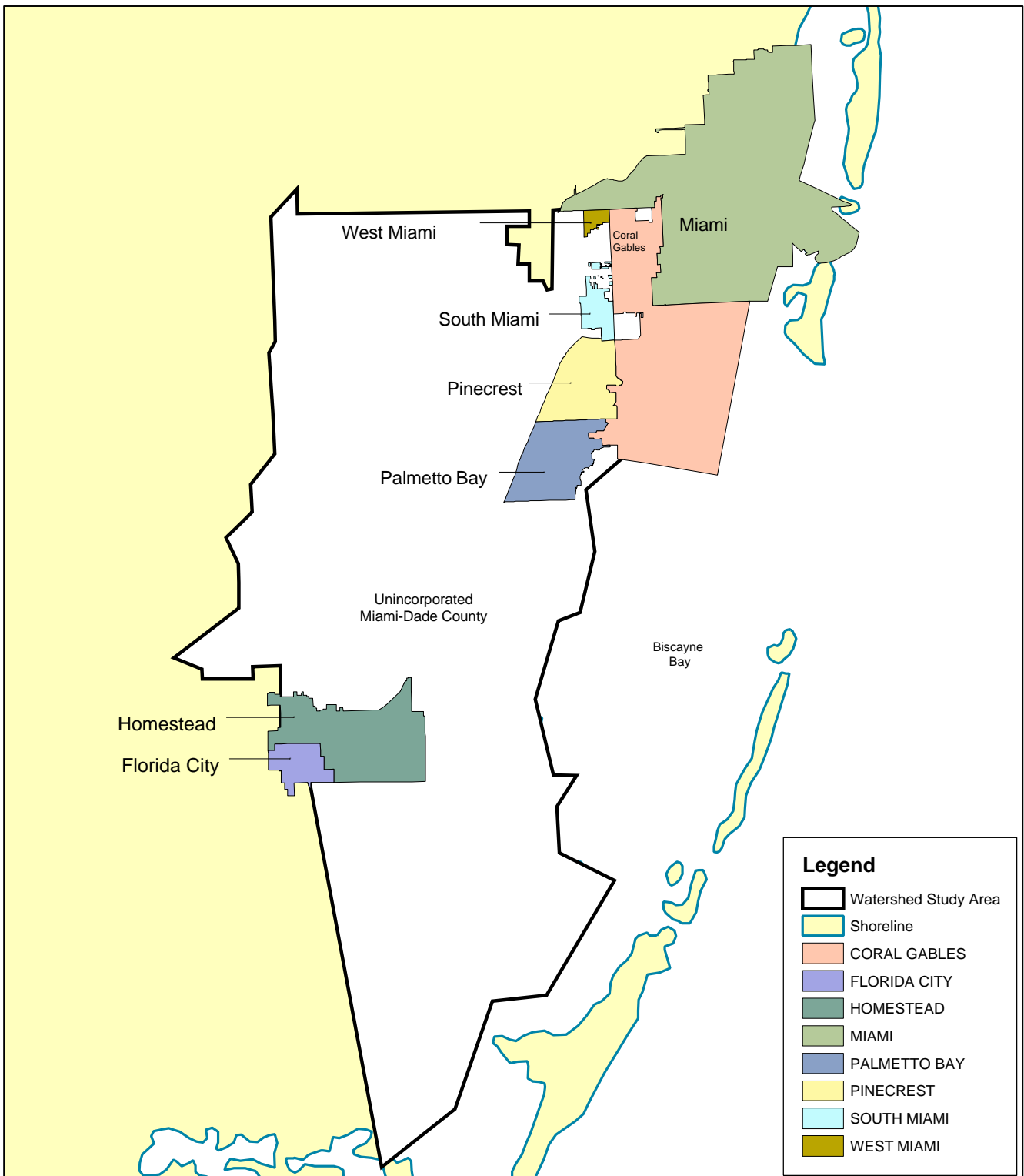


Figure 6  
Miami-Dade Municipalities

South Miami-Dade  
Watershed Study and Plan

Source: Based on data provided by Miami-Dade County ITD

0 1 2 4 Miles



Z:\Projects\17161 South Miami-Dade Watershed\GIS Data\GIS Projects\SubTask 1.6 GIS Maps\Miami-Dade Municipalities.mxd